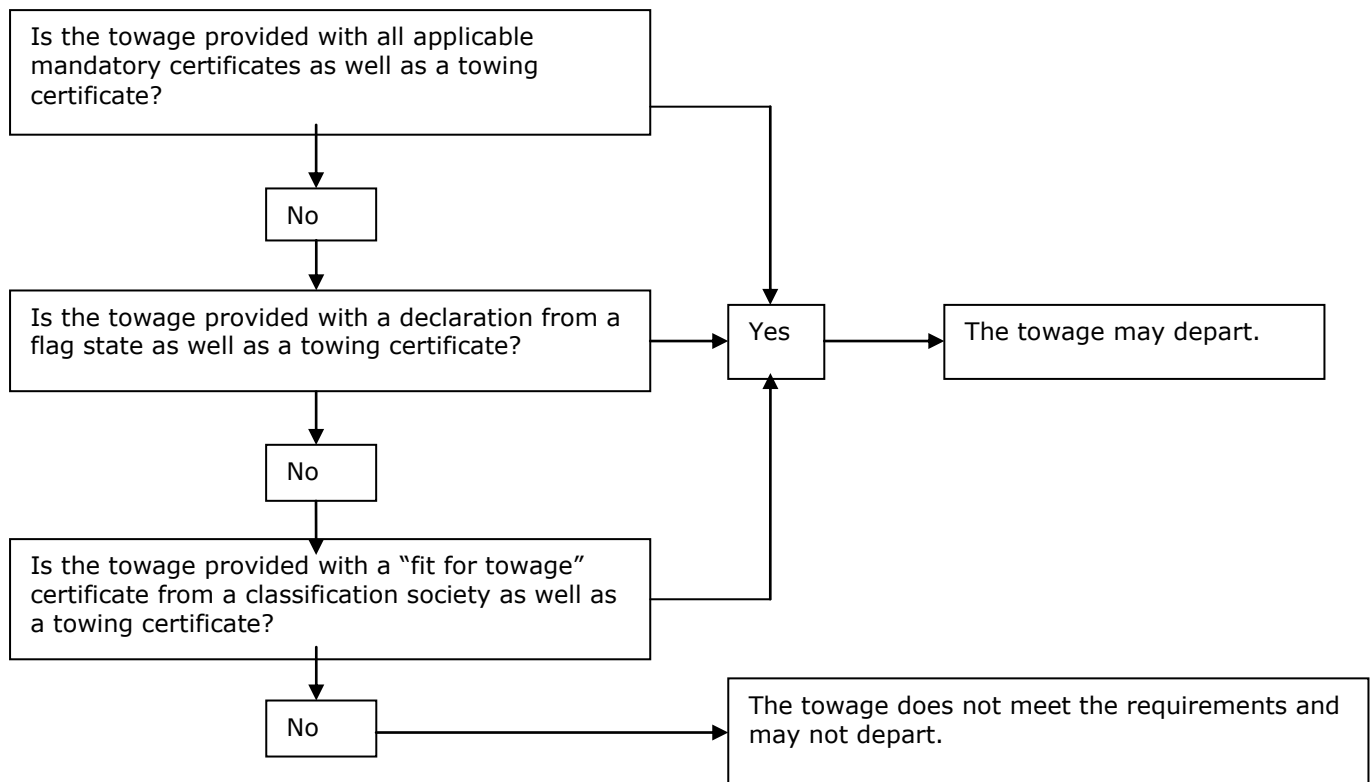




Diagram showing the certificates prescribed in the case of towing operations (sea and inland waterways)

Flowchart: sea-going towing operations



Enforcement in relation to towing operations on inland waterways by sea-going towing vessels

On inland waterways it is also the case that the captain of the towing vessel will be responsible for the towage, regardless of what is being towed by a sea-going vessel, whether it is a yacht or an inland waterway vessel. This responsibility must be demonstrable.

In the case of a towing operation taking place exclusively on inland waterways, the Netherlands Shipping Inspectorate consents to a towing declaration or towing certificate issued by an insurance company or a loss adjuster.

Flowchart: towing operations on inland waterways

